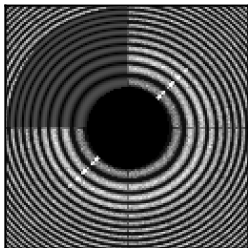
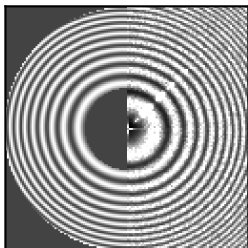


# micctfdetermine test\_mic.hdf test\_output.pdf

## CTFFIND power montage



## CTFTILT power montage



## CTFFIND report

```

Estimated defocus values      : 42296.12 37293.39 Angstroms
Estimated azimuth of astigmatism: -77.50 degrees
Score                        : 0.42101
Thon rings with good fit up to : 7.1 Angstroms
    
```

## CTFTILT report

```

DFMID1 DFMID2 ANGAST CC
37326.11 42314.03 12.05 86.97 0.00 0.40224 Final Values
EQUATION FOR CALCULATING DEFOCUS DFL1,DFL2 AT LOCATION NX,NY:

DFL1 = DFMID1 +DF
DFL1 = DFMID1 -DF
DFL2 = DFMID2 +DF
DFL2 = DFMID2 -DF
DF = (N1*DX+N2*DY)/PSIZE*TAN(TANGLE)
DX = CX-NX
DY = CY-NY
CX = CENTER_X = 500
CY = CENTER_Y = 500
PSIZE = PIXEL SIZE [A] = 5.0000
N1,N2 = TILT AXIS NORMAL
N1 = SIN(TLTAXIS) = 0.998604
N2 = -COS(TLTAXIS) = -0.052825

37326.11 42314.02 <-(DFMID1,DFMID2)-> 37326.12 42314.03
37326.11 42314.02 <-(DFMID1,DFMID2)-> 37326.12 42314.03
1, 1000 <---(NX,NY)---> 1000, 1000

37326.11, 42314.03
500, 500

1, 1 <---(NX,NY)---> 1000, 1
37326.11, 42314.02 <-(DFMID1,DFMID2)-> 37326.12, 42314.03
37326.11, 42314.02 <-(DFMID1,DFMID2)-> 37326.12, 42314.03
    
```

Micrographs  
 Diagnostic plot pattern  
 Spring database option  
 Spring db file  
 Continue spring db option  
 Spherical aberration  
 Electron voltage in kV  
 Amplitude contrast  
 Pixel size in Angstrom  
 Range of defocus in Angstrom  
 Defocus search step size  
 Astigmatism search restraint in Angstrom  
 Tile size power spectrum in Angstrom  
 Resolution search range in Angstrom  
 CTFTILT refine option  
 Local defocus search range  
 Expected tilt and tilt search range in degrees  
 Binning option  
 Binning factor  
 MPI option  
 Number of CPUs  
 Temporary directory  
 Tue, 09 Mar 2021 00:04:09 (PID=78636)

= test\_mic.hdf  
 = test\_output.pdf  
 = False  
 = /spring.db  
 = False  
 = 2.0  
 = 200  
 = 0.1  
 = 5.0  
 = (35000, 45000)  
 = 500  
 = 6000  
 = 640  
 = (30.0, 10.0)  
 = True  
 = 5000  
 = (0, 10)  
 = False  
 = 1  
 = False  
 = 1  
 = docmicctfdetermine/test\_micctfdetermine  
 Printed to test\_output.pdf